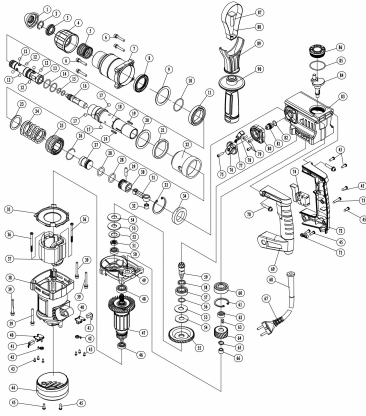


Polymak

PM28RH Model No: PM28RH
 Impact Stroke: 4J
 Impact Rating: 47700ipm
 Power: 800W
 No Load Speed: 815rpm
 Voltage/Frequency: 220V~50Hz



www.polymak.co.in

Polymak

PM28RH SPARE PARTS LIST

No	Parts Name	Pcs	Serial No	INR	No	Parts Name	Pcs	Serial No	INR
1	Ball end cover	1			38	housing	1		
2	O13 spindle steel	1			39	screw set M5x8	4		
3	Ball cover	1			40	brush holder	2		
4	Washer	1			41	carbon brush	2		
5	Washer 4x3x1.5-0.5	1			42	flat spring	2		
6	screw M5x30	4			43	screw ST2 2x12 C type	6		
7	Iron cover	1			44	iron housing	1		
8	Washer 4x3x1.5-1.5	1			45	screw K4x16	8		
9	washer 4x3x1.5-1.5-2	1			46	bearing 608	1		
10	O13 spindle steel	1			47	armature	1		
11	bearing 61907	1			48	bearing 6001	1		
12	Sp 14 steel ball 20x15	7			49	middle cover	1		
13	spading sleeve	1			50	bearing 602	1		
14	O ring 40x14x2.5PMU	2			51	M10 nut	1		
15	O ring 41x14.5PMU	2			52	spring 16	1		
16	strike rod	1			53	Friction plate gasket	2		
17	Sp 14 steel ball 20x15	3			54	Friction plate	2		
18	oil motor	1			55	clutch gear	1		
19	Hex washer 3x3x18	2			56	washer 4x4x1.5-0.5	1		
20	washer 4x3x1.5-1.5	1			57	bearing 6002	1		
21	WATER COOLING SYSTEM	1			58	spading sleeve	1		
22	Washer bush	1			59	small pinion	1		
23	washer 4x2.2x1.5-1.5	1			60	bearing 6002	1		
24	sp 14 steel ball 20x15	1			61	500mm crank	1		
25	Cylinder gear gear	1			62	crankshaft locking	1		
26	O13 spindle steel	1			63	flat washer 4x4x1.2	1		
27	strike hammer	1			64	crankshaft gear	1		
28	O ring 41x14.5 1.5PMU	2			65	O13 spindle steel	1		
29	pinion pin 4x1.5-1.5	1			66	oil bearing	1		
30	plate	1			67	slide ring pin	1		
31	link rod	1			68	slide sleeve	1		
32	oil bearing 4x12-10	1			69	left handle	1		
33	oil seal 4x12-10	1			70	screw set M5x30	2		
34	oil bearing 4x12-10	1			71	cable plate	1		
35	oil guide	1			72	right handle	1		
36	screw ST4 8x40	2			73	screw ST4 2x25	1		
37	flat nut	1			74	switch	1		

Polymak

PM28RH SPARE PARTS LIST

No	Parts Name	Pcs	Serial No	INR	No	Parts Name	Pcs	Serial No	INR
75	screw M4x10	1							
76	bush	1							
77	button roller spring 6.5x4x1.5	1							
78	button slider	1							
79	screw M4x10	3							
80	button holder	1							
81	adjustment bush	1							
82	O ring 6.5x4x1.5	1							
83	gear box	1							
84	crankshaft	1							
85	O ring 6.5x4x1.5	1							
86	oil cap	1							
87	screw M4x10	1							
88	stemp	1							
89	holder	1							
90	side handle	1							