

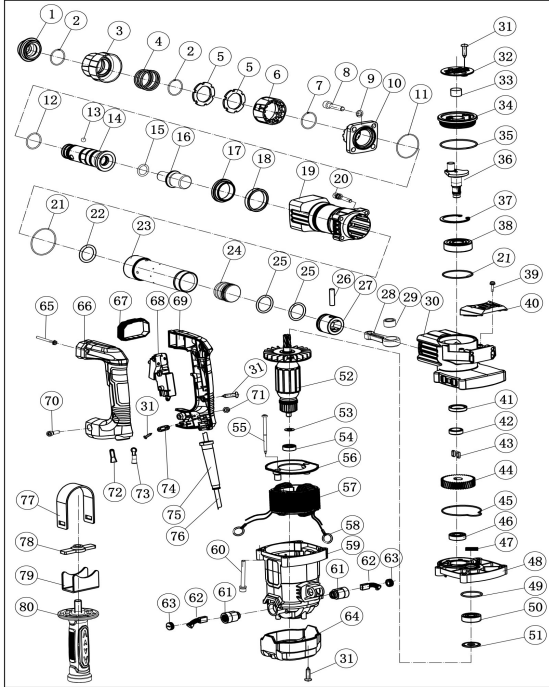
Polymak®

PMDH07 DEMOLITION HAMMER

Power:900W

Blows perminute:3100bpm

Max. Impact energy:8J



Polymak®

PMDH07 DEMOLITION HAMMER

| Spare Parts List | | | | | | | | | |
|------------------|------------------------------|-----|---------|-----|-----|---------------------------|-----|---------|-----|
| NO. | DESCRIPTION | QTY | Seri No | INR | NO. | DESCRIPTION | QTY | Seri No | INR |
| 1 | Rubber Sleeve | 1 | | | 41 | Frame Oil Seal | 1 | | |
| 2 | Circlip | 2 | | | 42 | Distance Ring | 1 | | |
| 3 | Steel Frame | 1 | | | 43 | Flat Key | 2 | | |
| 4 | Spring of Steel Frame | 1 | | | 44 | Gear | 1 | | |
| 5 | Positioning Plate | 2 | | | 45 | O Ring | 1 | | |
| 6 | Adjusting Positioning Sleeve | 1 | | | 46 | Bearing | 1 | | |
| 7 | Circlip | 1 | | | 47 | Thread Ring | 1 | | |
| 8 | Screw | 4 | | | 48 | Middle Cover | 1 | | |
| 9 | Spring Gasket | 8 | | | 49 | O Ring | 1 | | |
| 10 | Steel Head | 1 | | | 50 | Bearing | 1 | | |
| 11 | O Ring | 1 | | | 51 | Dust-proof Cushion | 1 | | |
| 12 | O Ring | 1 | | | 52 | Rotor | 1 | | |
| 13 | Steel Ball | 2 | | | 53 | Flat Gasket | 1 | | |
| 14 | Rotational Sleeve | 1 | | | 54 | Bearing | 1 | | |
| 15 | O Ring | 1 | | | 55 | Screw | 2 | | |
| 16 | Impactor | 1 | | | 56 | Windshield Ring | 1 | | |
| 17 | Circlip of Impactor | 1 | | | 57 | Stator | 1 | | |
| 18 | Gasket | 1 | | | 58 | Tension Spring | 2 | | |
| 19 | Cylinder Housing | 1 | | | 59 | Housing | 1 | | |
| 20 | Screw | 4 | | | 60 | Screw | 4 | | |
| 21 | O Ring | 2 | | | 61 | Carbon Brush Holder | 2 | | |
| 22 | O Ring | 1 | | | 62 | Carbon Brush | 2 | | |
| 23 | Cylinder | 1 | | | 63 | Carbon Brush Holder Cover | 2 | | |
| 24 | Impact Hammer | 1 | | | 64 | Rear Cover | 1 | | |
| 25 | O Ring | 2 | | | 65 | Screw | 2 | | |
| 26 | Piston Pin | 1 | | | 66 | Left Handle | 1 | | |
| 27 | Piston Pin | 1 | | | 67 | Rubber Sleeve | 1 | | |
| 28 | Connect Rod | 1 | | | 68 | Switch | 1 | | |
| 29 | Oil Bearing | 1 | | | 69 | Right Handle | 1 | | |
| 30 | Gear Housing | 1 | | | 70 | Screw | 1 | | |
| 31 | Screw | 11 | | | 71 | Nut | 1 | | |
| 32 | Plate of Oil Cover | 1 | | | 72 | Wiring Cap | 1 | | |
| 33 | Wool Felt | 1 | | | 73 | Copper Buckle | 1 | | |
| 34 | Oil Cover | 1 | | | 74 | Cable Fixation Plate | 1 | | |
| 35 | O Ring | 1 | | | 75 | Cable Sleeve | 1 | | |
| 36 | Eccentric Shaft | 1 | | | 76 | Cable | 1 | | |
| 37 | Hole Circlip | 1 | | | 77 | Hoop | 1 | | |
| 38 | Bearing | 1 | | | 78 | NUT | 1 | | |
| 39 | Screw | 3 | | | 79 | Bracket | 1 | | |
| 40 | Decorative Cover | 1 | | | 80 | Auxiliary Handle | 1 | | |