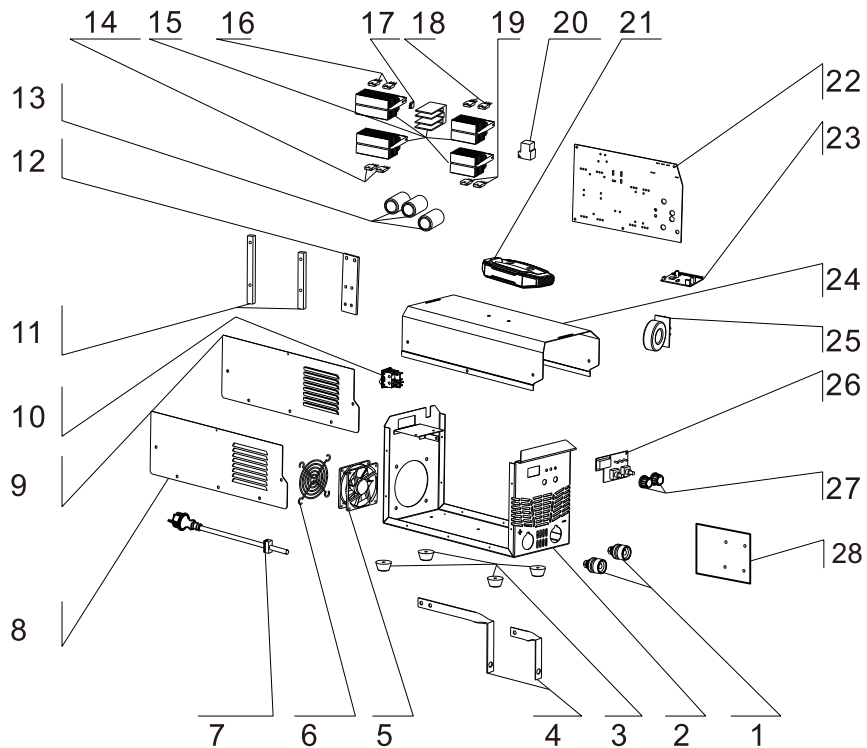


# Polymak®

## PM-MMA-260-DY

current:	20-220A
input voltage:	160-250V
max input power:	10.8kw
max output current:	25.5A
power factor:	0.73
efficiency:	85%
duty cycle:	60%



# Polymak®

NO	Name	PCS	INR
1	connector 35-50	2	
2	base housing	1	
3	rubber feet	4	
4	copper bar	2	
5	fan	1	
6	fan cover	1	
7	power cable	1	
8	left housing plate	1	
9	right housing plate	1	
10	50A switch	1	
11	suppoert bar	2	
12	ALU fixing bar	1	
13	capacitr	3	
14	IGBT turb	2	
15	radiator set	5	
16	IGBT turb	2	
17	temperature controller	1	
18	fast revoer diode	2	
19	fast revoer diode	2	
20	rely	1	
21	handle	1	
22	main pcb	1	
23	signal control pcb	1	
24	outer housing	1	
25	main transformer	1	
26	display pcb	1	
27	knob	2	
28	insulation plate	1	